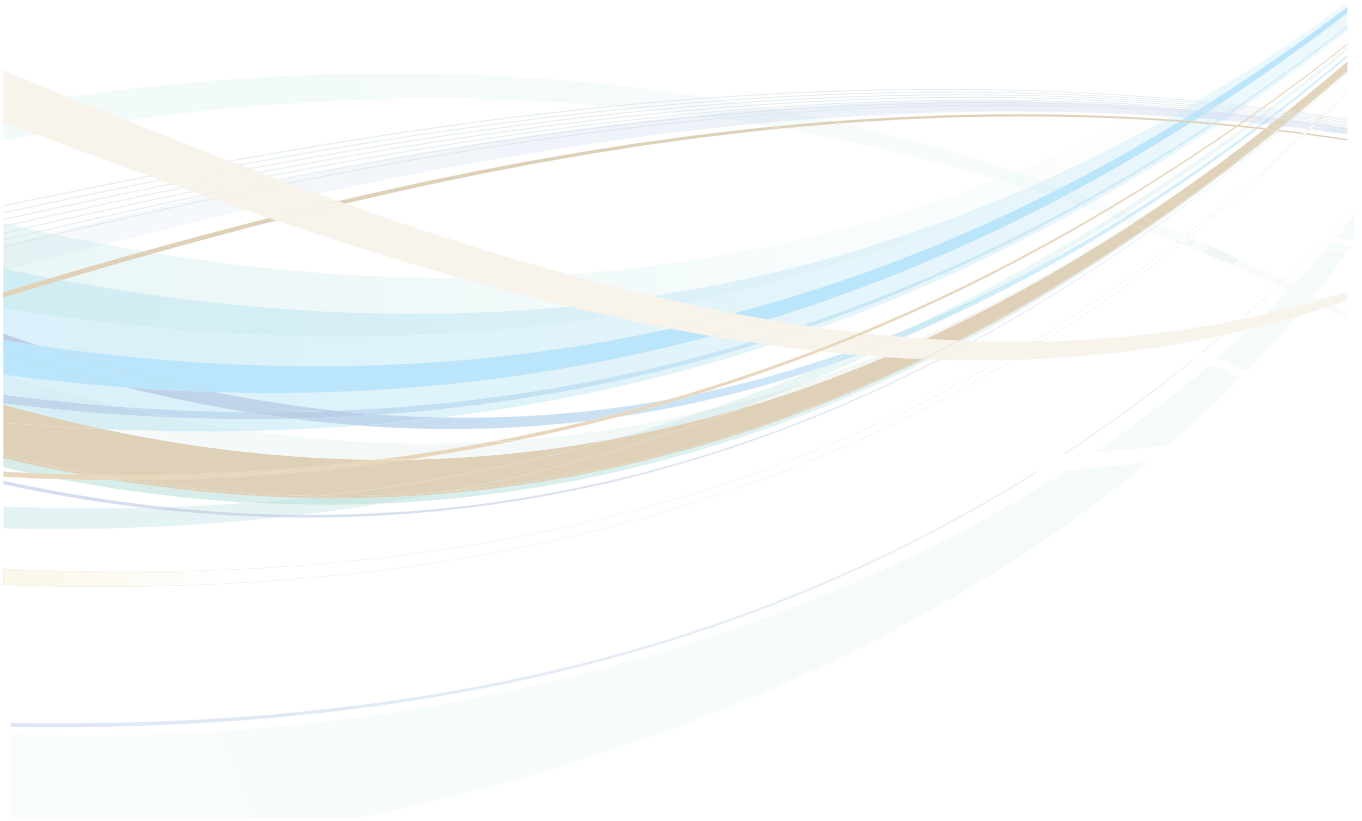


# Northwell Health Premium Network Facility and Resource Guide

2016



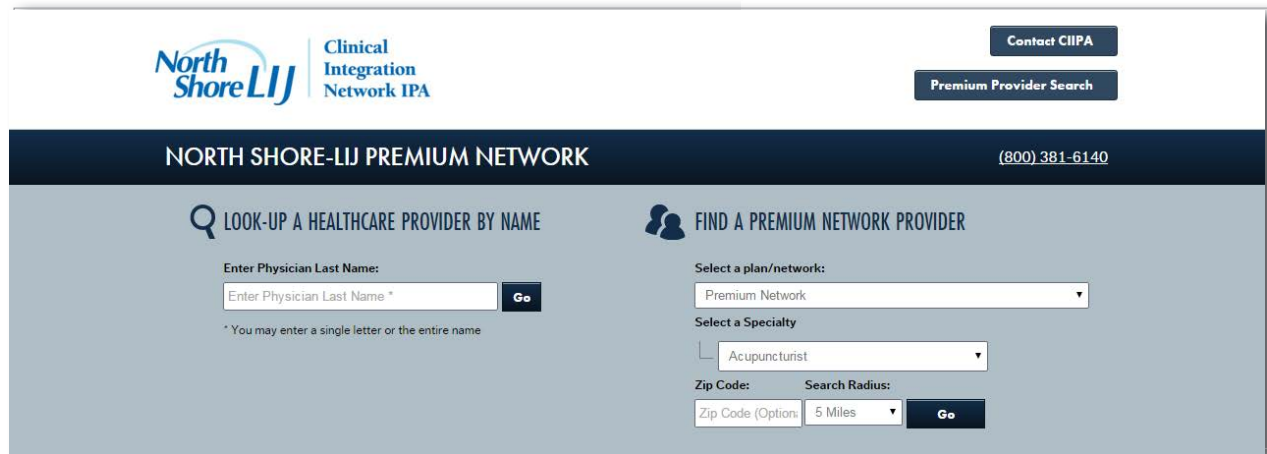
## Congratulations on enrolling in Northwell Health's Premium Network

Use this guide to find the facilities and services available through Northwell Health's Premium Network. Locations and contact information are included for all of the listed facilities.

### How to Look Up a Provider by Name, Specialty, Geography, or Value-Based Plan

**Offering:** You may search for providers using various criteria via the Premium Network search function at <http://ciipa.nsljweb.com/nslj-premium-network/>

You will then have the option to search for a healthcare provider by name or value-based plan, specialty, and location.\* This assures you will find the provider with the clinical expertise you need in a location most convenient for your patient.



The screenshot shows the search interface for the North Shore-LIJ Premium Network. At the top left is the North Shore LIJ Clinical Integration Network IPA logo. On the top right are buttons for 'Contact CIIPA' and 'Premium Provider Search'. Below the header is a dark blue bar with 'NORTH SHORE-LIJ PREMIUM NETWORK' and the phone number '(800) 381-6140'. The main content area is divided into two search options: 'LOOK-UP A HEALTHCARE PROVIDER BY NAME' and 'FIND A PREMIUM NETWORK PROVIDER'. The first option has a text input field for 'Enter Physician Last Name \*' and a 'Go' button. The second option has a dropdown for 'Select a plan/network:' (set to 'Premium Network'), a dropdown for 'Select a Specialty' (set to 'Acupuncturist'), and fields for 'Zip Code' and 'Search Radius' (set to '5 Miles') with a 'Go' button. A small note below the first search option states: '\* You may enter a single letter or the entire name'.

### Provider Nominations

If you would like to nominate a colleague for the Premium Network please email us the provider's first and last name, group name, office location, primary specialty, phone number, and fax number to [CIIPA@nshs.edu](mailto:CIIPA@nshs.edu).

\*For best results, we recommend searching by both specialty and zip code

## TABLE OF CONTENTS

<b>Wellness &amp; Prevention Services</b>	4
<b>Diabetes Self-Management Programs</b>	4
<b>Ambulatory &amp; Specialty Treatment Centers</b>	5-6
<b>Specialty Programs</b>	7
<b>Women's Health</b>	8-9
<b>Urgent Care Centers</b>	10
<b>Northwell Health Hospitals</b>	11-12
<b>Behavioral Health Services</b>	13-14

**See separate listings for lab, imaging and rehabilitation services**

## WELLNESS AND PREVENTION SERVICES

### **Smoking Cessation**

*Huntington Hospital*  
“Learn to be Tobacco Free”  
270 Park Avenue  
Huntington, NY 11743  
(631) 351-2000

*Northwell Health Medical Group*  
*Division of General Internal Medicine*  
2001 Marcus Avenue, Suite S160  
Lake Success, NY 11042  
(516) 519-5600

*Lenox Hill Hospital*  
Tobacco Dependence Support  
Groups (headed by Jerome Kogan,  
Psy D) 210 East 64th Street  
New York, NY 10065  
(212) 434-2961

*Staten Island University Hospital*  
*Center for Complimentary Medicine*  
256 Mason Avenue, 3rd Floor  
Staten Island NY 10305  
(718) 226-6951

## DIABETES SELF-MANAGEMENT PROGRAMS

### **North Shore Center for Diabetes and Pregnancy**

865 Northern Boulevard  
Great Neck, NY 11021  
(516) 622-5155

Patient focus: Women of child-bearing age with Gestational Diabetes

### **North Shore Endocrinology**

2300 Marcus Avenue, Suite 200  
Lake Success, NY 11042  
(516) 742-3750

Patient Focus: Adults with Type-1 or Type-2 Diabetes

### **Pediatric Endocrinology at Cohen's Children's Medical Center**

1991 Marcus Avenue, Suite M100  
Lake Success, NY 11042  
(516) 472-3750

Patient focus: Children/Adolescents with Type-1 or Type-2 Diabetes

### **Staten Island**

242 Mason Avenue  
Staten Island, NY 10305  
(718) 226-1547

Patient focus: Adults and pregnant women with Type-1, Type-2 or Gestational Diabetes

## AMBULATORY & SPECIAL TREATMENT CENTERS

All Northwell Health hospitals offer a variety of outpatient services and specialty programs. Please visit the individual facilities websites found at [www.northshorelij.com](http://www.northshorelij.com) for a complete list of hospital-based services. The following services are offered at the off-site locations below:

### Ambulatory Surgery Centers

---

#### Endoscopy Center of Long Island (ECLI)

711 Stewart Avenue  
Garden City, NY 11530  
Phone: (516) 227-ECLI (3254)  
Fax: (516) 998-4078  
Monday-Friday: 7:30am – 4:00pm

#### Garden City Surgery Center

400 Endo Boulevard  
Garden City, NY 11530  
Phone: (516) 832-8504  
Monday-Friday: 7:30am – 4:00pm

### Center for Advanced Medicine

---

#### Monter Cancer Center

(516) 734-8900

#### Ambulatory Surgery Center

(516) 734-8000

#### Mitchell A. Goldman, MD

#### Diagnostic Imaging Center

(516) 734-8600  
450 Lakeville Road  
Lake Success, NY 11042

### Cushing Neuroscience Institute

---

Phone: (855) 56-NEURO

Cushing Neuroscience Institute Brain and Spine Specialists of New York includes the following specialty centers:

Brain Tumor Center

Chiari Institute

Comprehensive Epilepsy Care Center

General Neurology

Headache Center

Hyperhidrosis Center Hypothalamic

Hamartoma Center Memory Disorders Center

Movement Disorders Center

Moyamoya Center

Multiple Sclerosis Center

Nerve Disorders Center

Neurocritical Care Center

Normal Pressure Hydrocephalus Center Pain Center

Pediatric Neuroscience Center

Skull Base Center

Spine Center

Stroke Center

Traumatic Brain Injury Center

## **Radiation Oncology**

---

**Glen Cove Hospital  
Don Monti Cancer Center**  
101 St. Andrews Lane  
Glen Cove, NY  
(855) 858-8550 or  
888-321-DOCS

**Lenox Hill Hospital**  
130 East 77th Street, 10th Floor  
New York City, NY  
(855) 858-8550 or  
888-321-DOCS

**Long Island Jewish Medical Center**  
270-05 76th Avenue  
New Hyde Park, NY  
(855) 858-8550 or  
888-321-DOCS

**North Shore Medical Accelerator**  
270 Pulaski Road  
Greenlawn, NY  
(855) 858-8550 or  
888-321-DOCS

**North Shore University Hospital at Manhasset**  
300 Community Drive  
Manhasset, NY  
(855) 858-8550 or  
888-321-DOCS

**Southside Hospital**  
301 East Main Street  
Bayshore, NY  
(855) 858-8550 or  
888-321-DOCS

**Staten Island University Hospital**  
475 Seaview Avenue  
Staten Island, NY  
(855) 858-8550 or  
888-321-DOCS

## **Staten Island Specialty Centers**

---

**Anticoagulation Service**  
(718) 226-6231

**Sanford R. Nalitt Institute  
for Cancer and Blood Related Diseases**  
(718) 226-6400

**SIUH Center for Ambulatory Services**  
(718) 226-1370  
256-C Mason Avenue, 1st Floor  
Staten Island, NY 10305

## **Sleep Disorders**

---

**Sleep Disorders Center**  
410 Lakeville Road, Suite 105  
North Hempstead, NY 11004  
(877) 753-3763

**Institute for Sleep Medicine  
Staten Island University Hospital South**  
375 Seguire Avenue  
Staten Island, NY 10305  
(718) 226-2331

## SPECIALTY PROGRAMS

### **Center for AIDS Research and Treatment**

400 Community Drive  
Manhasset, NY 11030  
(516) 562-4280

### **Center for Colon and Rectal Diseases**

900 Northern Boulevard, Suite 100  
Great Neck, NY 11021  
(516) 730-2100

### **Cushing Neuroscience Institute**

611 Northern Boulevard, Suite 150  
Great Neck, NY 11021  
(516) 325-7000

### **Endoscopy Center of Long Island (ECLI)**

711 Stewart Avenue  
Garden City, NY 11530  
Phone: (516) 227-ECLI (3254)  
Fax: (516) 998-4078  
Monday-Friday: 7:30am – 4:00pm

### **Hagedorn Cleft Palate and Craniofacial Center**

225 Community Drive  
Great Neck, NY 11021  
(516)  
466-2990

### **Hearing and Speech Center**

430 Lakeville Road  
North Hempstead, NY 11004  
(718) 470-8910

### **Monter Cancer Center (CFAM)**

450 Lakeville Road  
Lake Success, NY 11042  
(516) 734-8866

### **New York Head & Neck Institute**

130 East 77th Street, 10th Floor  
New York, NY 10075  
(212) 434-4500

### **North Shore Radiation Therapy**

270 Pulaski Road  
Huntington, NY 11743  
(631) 427-2273

### **North Shore Medical Accelerator**

989 West Jericho Turnpike, Suite 2  
Smithtown, NY 11787  
(631) 864-5600

### **The Alvin and Dorothy Schwartz Ambulatory Surgery Center**

300 Community Drive  
Manhasset, NY 11030  
(516) 562-8628

## WOMEN'S HEALTH

### **Ann & Jules Gottlieb Women's Comprehensive Health Center**

1554 Northern Boulevard, 5th Floor  
Manhasset, NY 11030  
(516) 390-WCHC (9242)

Physicians custom tailor a woman's care as she progresses from adolescence into the reproductive years, through menopause, and beyond.

### **Breast Imaging Center & Center for Advanced Medicine**

450 Lakeville Road  
Lake Success, NY 11042  
(516) 734-8600

Offers women a comprehensive, multi-disciplinary approach to routine breast care and breast cancer treatment.

### **Center for Human Reproduction**

300 Community Drive, Lower Level  
Manhasset, NY 11030  
(516) 562-BABY (2229)

Offers all diagnostic and treatment services for infertility.

### **Katz Women's Hospital at Long Island Jewish Medical Center**

270-05 76th Avenue  
New Hyde Park, NY 11040  
(888) 594-4343

Provides comprehensive services for a broad range of women's health issues.

### **Katz Women's Hospital at North Shore University Hospital**

300 Community Drive  
Manhasset, NY 11030  
(888) 594-4343

Provides comprehensive services for a broad range of women's health issues.

### **Maternal-Fetal Medicine at North Shore University Hospital**

865 Northern Boulevard  
Great Neck, NY 11021  
(516) 622-5155

Services pregnant women with obstetrical or medical complications, or both.



**Northwell Health Center for Diabetes in Pregnancy**

865 Northern Boulevard  
Great Neck, NY 11021  
(516) 622-5155

Provides quality education, commitment to individualized care and patient empowerment to women who have diabetes during pregnancy.

**Sharon Joyce Schlanger Center for Women's Care**

865 Northern Boulevard  
Great Neck, NY 11021  
(516) 622-5100

Assists patients in remaining healthy, and anticipating and treating problems while they are still in the early stages of pregnancy.

## URGENT CARE CENTERS

**Northwell Health Medical Group  
Urgent Care Center – Rego Park**  
95-25 Queens Boulevard  
Rego Park, NY 11374  
(718) 925-6565

Monday-Friday: 8am – 8pm,  
Saturday: 10am – 6pm, Sunday: 10am – 4pm

**Northwell Health Medical Group  
Urgent Care Center – Bethpage**  
4300 Hempstead Turnpike  
Bethpage, NY 11714  
(516) 396-8500

Monday-Friday: 9am – 9pm,  
Saturday: 10am – 6pm, Sunday: 10am – 4pm

**Garden City Surgicenter**  
400 Endo Boulevard  
Garden City, NY 11530  
(516) 832-8504

**GoHealth Urgent Care Center – Bay Shore**  
521 Montauk Highway  
Bay Shore, NY 11706  
(516) 858-3724  
Monday-Friday: 8am – 8pm  
Saturday and Sunday: 9am – 5pm

**GoHealth Urgent Care Center – East Northport**  
1912 Jericho Turnpike  
East Northport, NY 11731  
(631) 238-3065

Monday-Friday: 8am – 8pm  
Saturday and Sunday: 9am – 5pm

**GoHealth Urgent Care Center – Forest Hills**  
102-29 Queens Boulevard  
(Corner of 68th and Queens Boulevard)  
Forest Hills, NY 11375  
(516) 858-3724

Monday-Friday: 8am – 8pm  
Saturday and Sunday: 9am – 5pm

**GoHealth Urgent Care Center – Massapequa**  
5165 Merrick Road  
Massapequa, NY 11375  
(516) 858-3723

Monday-Friday: 8am – 8pm  
Saturday and Sunday: 9am – 5pm

**GoHealth Urgent Care Center – Plainview**  
377D South Oyster Bay Road  
Plainview, NY 11803  
(516) 858-3724

Monday-Friday: 8am – 8pm  
Saturday and Sunday: 9am – 5pm

**GoHealth Urgent Care Center – Syosset**  
103-17 Jackson Avenue  
Syosset, NY 11791  
(516) 537-9062

Monday-Friday: 8am – 8pm  
Saturday and Sunday: 9am – 5pm

**GoHealth Urgent Care Center – Staten Island**  
1700 Hylan Boulevard  
Staten Island, NY 10301  
(718) 502-8425

Monday-Friday: 8am – 8pm  
Saturday and Sunday: 9am – 5pm

**GoHealth Urgent Care Center – Staten Island**  
125 Greaves Lane  
Staten Island, NY 10301  
(718) 502-8763

Monday-Friday: 8am – 8pm  
Saturday and Sunday: 9am – 5pm

**Center for Emergency Medical Services (CEMS)**  
Nassau: (516) 719-5000  
Suffolk: (631) 719-5000  
Queens & Staten Island: (718) 747-4911  
New York Metropolitan Area: (212) 434-4911

## NORTHWELL HEALTH HOSPITALS

Northwell Health is an award-winning network of 19 hospitals and other healthcare entities serving Long Island, Queens, Manhattan, Staten Island, and Westchester. For cancer care, heart health, labor and delivery—and for just about every other medical need—both physicians and patients can count on our vast resources and expertly-trained specialists.

### **Forest Hills Hospital**

102-01 66th Road  
Forest Hills, NY 11375  
(718) 830-4000 (General)  
(718) 830-4200 (Emergency)

### **Franklin Hospital**

900 Franklin Avenue  
Valley Stream, NY 11580  
(516) 256-6000 (General)  
(516) 256-6350 (Emergency)

### **Glen Cove Hospital**

101 St. Andrews Lane  
Glen Cove, NY 11542  
(516) 674-7300 (General)  
(516) 674-7326 (Emergency)

### **Huntington Hospital**

270 Park Avenue  
Huntington, NY 11743  
(631) 351-2000 (General)  
(631) 351-2300 (Emergency)

### **Lenox Hill Hospital**

100 East 77th Street  
New York, NY 10075  
(212) 434-2000 (General)  
(212) 434-3042 (Emergency)

### **Long Island Jewish Medical Center**

270-05 76th Avenue  
New Hyde Park, NY 11040  
(718/516) 470-7000 (General)  
(718/516) 470-7500 (Emergency)

### **North Shore University Hospital**

300 Community Drive  
Manhasset, NY 11030  
(516) 562-0100 (General)  
(516) 562-4125 (Emergency)

### **Northern Westchester Hospital**

400 East Main Street  
Mount Kisco, NY 10549  
(914) 666-1200

### **Phelps Memorial Hospital**

701 N. Broadway  
Sleepy Hollow, NY 10591  
(914) 366-3000 (General)  
(914) 366-3590 (Emergency)

### **Plainview Hospital**

888 Old Country Road  
Plainview, NY 11803  
(516) 719-3000 (General)  
(516) 719-2336 (Emergency)

### **South Oaks Hospital (Behavioral/Mental Health)**

400 Sunrise Highway  
Amityville, NY 11701  
(631) 264-4000

### **Southside Hospital**

301 East Main Street  
Bay Shore, NY 11706  
(631) 968-3000 (General)  
(631) 968-3314 (Emergency)

### **Steven & Alexandra Cohen Children's Medical Center of New York**

269-01 76th Avenue  
New Hyde Park, NY 11040  
(718/516) 470-3000 (General)  
(718/516) 470-7640 (Emergency)

### **Staten Island University Hospital (North)**

475 Seaview Avenue  
Staten Island, NY 10305  
(718) 226-9000 (General)  
(718) 226-9140 (Emergency)

**Staten Island University Hospital (South)**

375 Seguine Avenue  
Staten Island, NY 10309  
(718) 226-2000 (General)  
(718) 226-2100 (Emergency)

**Syosset Hospital**

221 Jericho Turnpike  
Syosset, NY 11791  
(516) 496-6500 (General)  
(516) 496-6550 (Emergency)

**Zucker Hillside Hospital (Behavioral/Mental)**

75-59 263rd Street  
Glen Oaks, NY 11004  
(718/516) 470-8000 (General)  
(718/516) 470-8100 (Emergency)  
(718/516) 470-7500 (LIJ Emergency Department –  
after 5:00pm)

## NORTHWELL HEALTH POST ACUTE SERVICES

### **Northwell Health Home Care Network**

Nassau, Suffolk, Queens, Staten Island, and New York Metropolitan Area  
(866) 651-4200

Coordinates and provides high quality, in-home care for patients in need.

### **Hospice Care Network**

(800) 2-HOSPICE

(800) 246-7742

Services at home and in-patient hospice patients.

### **Northwell Health Physician House Calls**

Nassau, Suffolk: (516) 876-4100

Queens: (718) 830-4327

Provides at-home visits by physicians to home-bound patients.

### **Northwell Health Circle of Care**

(866) 651-4200

Resources for caring for senior citizens in the comfort of their homes.

---

### **Regioncare Nursing**

Nassau, Suffolk: (516) 505-4300

Queens, Staten Island, New York Metro Area: (718) 776-9870

Provides Home Health Aides/Personal Care Aides to those in need

### **RegionCare Infusion Therapy**

Nassau, Suffolk, Queens, Staten Island, New York Metro Area

(866) 651-4200

### **The Miracle Foundation Palliative Care Center**

(516) 224-6453

### **Physician/Nurse Practitioner Home Consultation Service**

University Hospice (Affiliated with Staten Island University Hospital)

Staten Island, Brooklyn & Queens: (718) 226-6450

Provides end of life care for patients and families.

## BEHAVIORAL HEALTH SERVICES

### **Franklin Hospital Psychiatric Unit**

900 Franklin Avenue  
Valley Stream, NY 11580  
(516) 256-6025

### **Huntington Hospital Psychiatric Unit**

270 Park Avenue  
Huntington, NY 11743  
(631) 351-2000

### **Lenox Hill Hospital Psychiatric Unit**

100 East 77th Street  
New York, NY 10075  
(212) 434-2830

### **North Shore University Hospital Psychiatric Unit**

300 Community Drive, 8 Tower  
Manhasset, NY 11030  
(516) 562-4745

### **South Oaks Hospital, Psychiatric and Substance Use Units**

400 Sunrise Highway  
Amityville, NY 11701  
(631) 608-5610

### **Southside Hospital Psychiatric Unit**

301 East Main Street  
Bay Shore, NY 11706  
(631) 968-3000

### **Staten Island University Hospital Psychiatric Unit (North Site)**

777 Seaview Avenue  
Staten Island, NY 10305  
(718) 226-2473

### **Staten Island University Hospital Psychiatric and Substance Use Unit (South Site)**

375 Seguine Avenue  
Staten Island, NY 10305  
(718) 226-2473

### **Syosset Hospital Psychiatric Unit**

221 Jericho Turnpike  
Syosset, NY 11791  
(516) 496-6500